



SERVICES - TAMPA BAY FULFILLMENT AND DISTRIBUTION

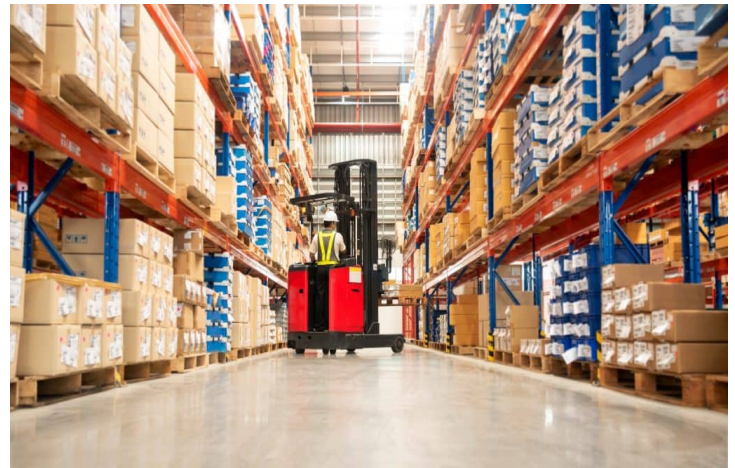
TURN KEY TAMPA BAY FULFILLMENT AND DISTRIBUTION SERVICES

What We Bring to the Table

- 260,000 Sq. Ft Tampa Bay Warehousing & Distribution Center
- In-House Fleet for Final Mile Pickup & Delivery
- Professional Warehouse & Project Management Staff to Oversee Your Project
- Technology Driven Inventory Management
- Infrastructure (Racks, Forklifts, Staff) Provided

Our Philosophy

Each project is unique with very specific goals and measures; you can expect the exact same from our approach. Whether your project is large or small, new or refreshed, MyPorter has a service or solution for you. We execute projects with quality and integrity – on time and on budget.



CORE OFFERINGS:

Flexible Terms and Speed to Contract

At MyPorter, we believe in flexibility. Month to month or fixed contracts, we can come up with a temporary or long-term program to help you complete your Tampa Bay fulfillment and distribution needs.

Tampa Bay Satellite Distribution Warehouse Services

MyPorter can offer a full-suite of TPA distribution services. If you are looking for a temporary option to handle seasonal demand spikes, we have programs for you. More permanent arrangements are also available. Whether you need Tampa Bay, FL cross-docking, FIFO / FILO tracking, palletizing of floor-loaded containers, or Tampa Bay freight coordinations services - we have a solution for you.

eCommerce and Tampa Bay Order Fulfillment Warehouse Services

Execute your brand promise to your customers by allowing MyPorter to handle orders and fulfillment services routed through Tampa Bay, FL. We can offer same-day and next day shipping as well as Tampa pick, pack, and shipping services. Kitting, bundling, and labeling are also available depending on your needs.

Tampa Bay Forward Stocking and Final Mile Delivery

MyPorter's Tampa Bay distribution centers are within 20 minutes of city-center in all markets we have a presence in. For sensitive product that must be delivered quickly, MyPorter can serve as a Tampa Bay forward stocking fulfillment and distribution center to reduce delivery times to end customers. With our dedicated fleet of 26 foot box trucks, we can also complete white glove delivery services.

Codee Burton

O: 813.590.5222

C: 678.910.1842

E: commercial@myporter.com

W: www.myportercommercial.com



CASE IN POINT

eCommerce Furniture Retailer Uses MyPorter for East Coast Fulfillment and Distribution

The Challenge

A eCommerce furniture retailer with a Los Angeles-only distribution and fulfillment center wanted to establish an East Coast hub to reduce shipping costs and time to customer. They needed a fulfillment partner with the ability to receive floor-loaded containers from Vietnam shipped in through the Port of Savannah, distribute the product as needed, and fulfill daily orders to be shipped to individual customers via UPS from MyPorter's distribution center.

How we Helped

MyPorter established clear, a-la-carte pricing for the various services required. The client received a flat rate charge per container for off-loading and palletizing the product in from overseas, monthly storage charges that flexed up and down based on product in the building each month, and a flat rate per order that was submitted by a certain time deadline each day. We quoted pricing for both same-day and next-day shipping that allowed the client to offer varying levels of service to their end customer.

Results

The client was thrilled with the optionality provided by MyPorter's fulfillment and distribution services. They cut average delivery times to their East Coast customers by 2 days and saved 30% on delivery costs, leading to higher customer satisfaction from their end customers. In addition, the CEO praised the team for allowing him to focus on selling and growing the business vs. monitoring the daily execution of their fulfillment and distribution logistics.



"These guys took care of the dirty work so I could spend my time growing and selling instead of worrying about execution. They've been a god send."

CEO - eCommerce Furniture Retailer

To find out more, contact:

commercial@myporter.com | 813.590.2222

